

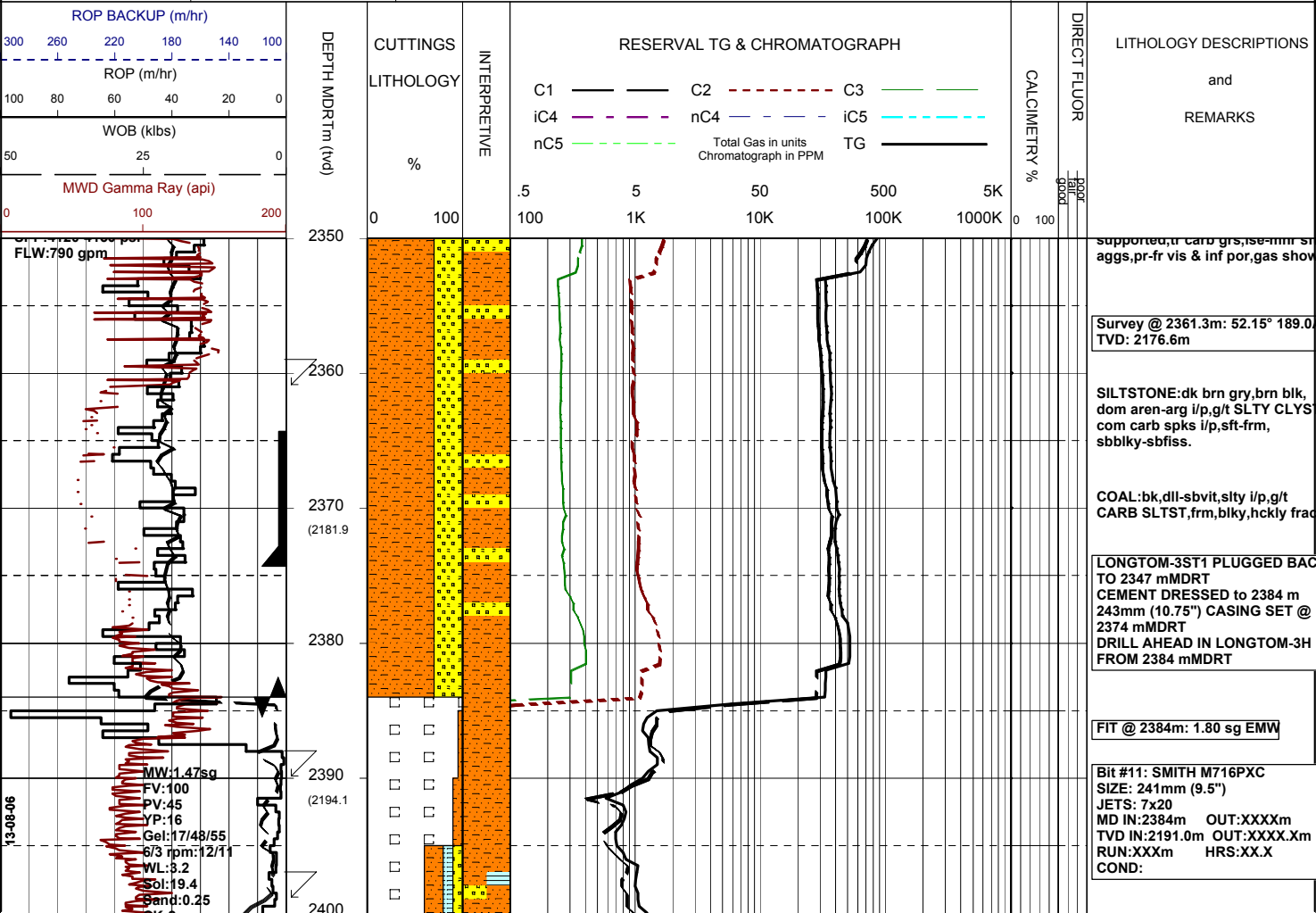


MASTERLOG LONGTOM-3H



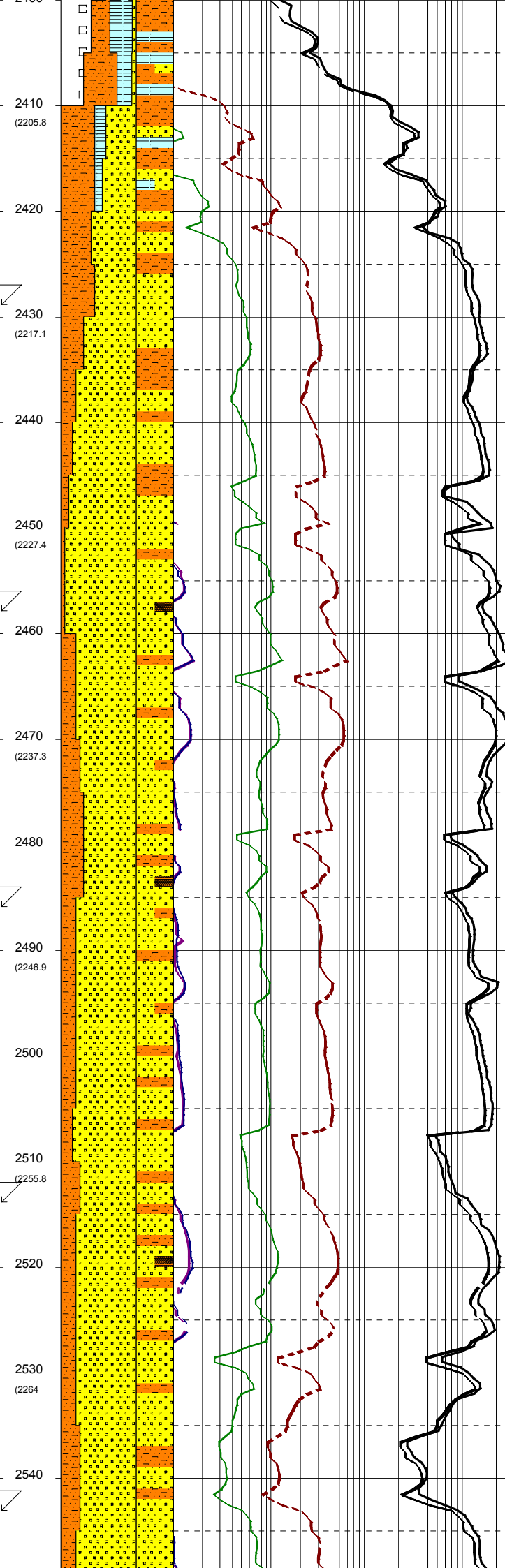
GENERAL	POSITION	HOLE / CASING INFO	DATE / DEPTH	ENGINEERS
Country : AUSTRALIA	Latitude : 38°05'34.63"S	914mm(36") hole to: 111.8m	Spud Date : 02-08-2006	T. N. KYAW
Permit : VIC/P54	Longitude : 148°18'41.52"E	559mm(22") hole to: 1005m	Total Depth Date : XX-XX-2006	A. DUNN
Field : LONGTOM	UTM Co-ord X (m E): 615006	241mm(9 1/2") hole to: m	Total Depth (mMDRT): m	D. ADDERLEY
Basin : GIPPSLAND	UTM Co-ord Y (m N): 5783059.3	762mm(30") Cond. to: 110.8m	True Vertical Depth (mTVDSS): m	P. RADY
Well Type : APPRAISAL	RT to LAT (m): 21.5	406mm(16") Csg. to: 995.32m	Log Scale : 1/ 500	
Rig: OCEAN PATRIOT	RT to Sea Bed (m): 78.2		Final Status : ??	

ABBREVIATIONS	LITHOLOGY LEGEND	ENGINEERING LEGEND
<p>MW Mud Weight</p> <p>FV Funnel Viscosity</p> <p>PV Plastic Viscosity</p> <p>YP Yield Point</p> <p>Gel Gel Strength</p> <p>WL Water Loss</p> <p>KCl Potassium Chloride</p> <p>Cl Chlorides</p> <p>Incl Inclination</p> <p>Az Azimuth</p> <p>WOB Weight on Bit (klbs)</p> <p>RPM Rotations Per Min</p> <p>FLW Flow Rate (gpm)</p> <p>SPP Pump Pressure (psi)</p> <p>RR Re-Run Bit</p> <p>TG Trip Gas</p> <p>CG Connection Gas</p> <p>BG Background Gas</p> <p>DGP Drilled Gas Peak</p> <p>MM Mud Motor</p>	<p>Claystone</p> <p>Siltstone</p> <p>Shale</p> <p>Fine SST</p> <p>Medium SST</p> <p>Coarse SST</p> <p>Mari</p> <p>Clay, Limestone</p> <p>Limestone</p> <p>Dolomite</p> <p>Coal</p> <p>Volcanic</p> <p>Lithic Fragment</p> <p>Foraminifera</p> <p>Fossils</p> <p>Bryozoa</p> <p>Sponges</p> <p>Brachiopoda</p> <p>Cement</p> <p>Glauconite</p> <p>Pyrite</p> <p>Iron Minerals</p> <p>Mica</p> <p>Siderite</p>	<p>Shoe</p> <p>Deviation survey</p> <p>DST</p> <p>TEST Test</p> <p>Sidewall Core</p> <p>Core</p> <p>DOLOMITE</p> <p>RFT</p> <p>FIT</p> <p>Mud loss</p> <p>Mud gain</p>



WQB:10-18 kls
RPM:160-180
SPP:3500-4060 psi
FLW:660-730 gpm

WOB:10-18 kls
RPM:160-170
SPP:3900-4050 psi
FLW:720-800 gpm



SILTSTONE:med dk brn,dk gry,
dom arg g/t SLTY CLYST,com carb
spks,frm-mod hd,sbbiky-sbfiss.

Survey @ 2439.8m: 53.53° 190.4°
TVD: 2200.1m

CLAYSTONE:dk gry,br gry,carb
spks & lsm,frm-rr mod hd,
sbbiky-blky.

SANDSTONE:clr-trnsl,grs,dom m
rr crs,mod wl srtd,sbang-sbrnd,
mod strg sil cmt,tr arg mtx,tr
carb spks,lse-mnr fri,pr-fr vis
& inf por,gas show.

Survey @ 2428.9m: 57.75° 191.2°
TVD: 2216.5m

SILTSTONE:med dk brn,dk gry,
dom arg g/t SLTY CLYST,com carb
spks,frm-mod hd,sbbiky-sbfiss.

SANDSTONE:clr-trnsl,dom f-me
mod wl srtd,sbang-sbrnd,
tr sil cmt,mod wk calc cmt,rr
carb spks,dom lse-mnr fri,pr-fr
vis & inf por,gas show.

Survey @ 2457.8m: 59.95° 191.2°
TVD: 2231.4m

SILTSTONE:med dk brn,dk gry,
dom arg g/t SLTY CLYST,com carb
spks,frm-mod hd,sbbiky-sbfiss.

Survey @ 2486.8m: 62.12° 191.8°
TVD: 2245.5m

SANDSTONE:clr-trnsl,dom f-me
rr crs,mod wl srtd,sbang-sbrnd,
mod wk calc cmt,com arg mtx,carb
spks,dom lse-mnr fri,pr-fr vis
& inf por,gas show.

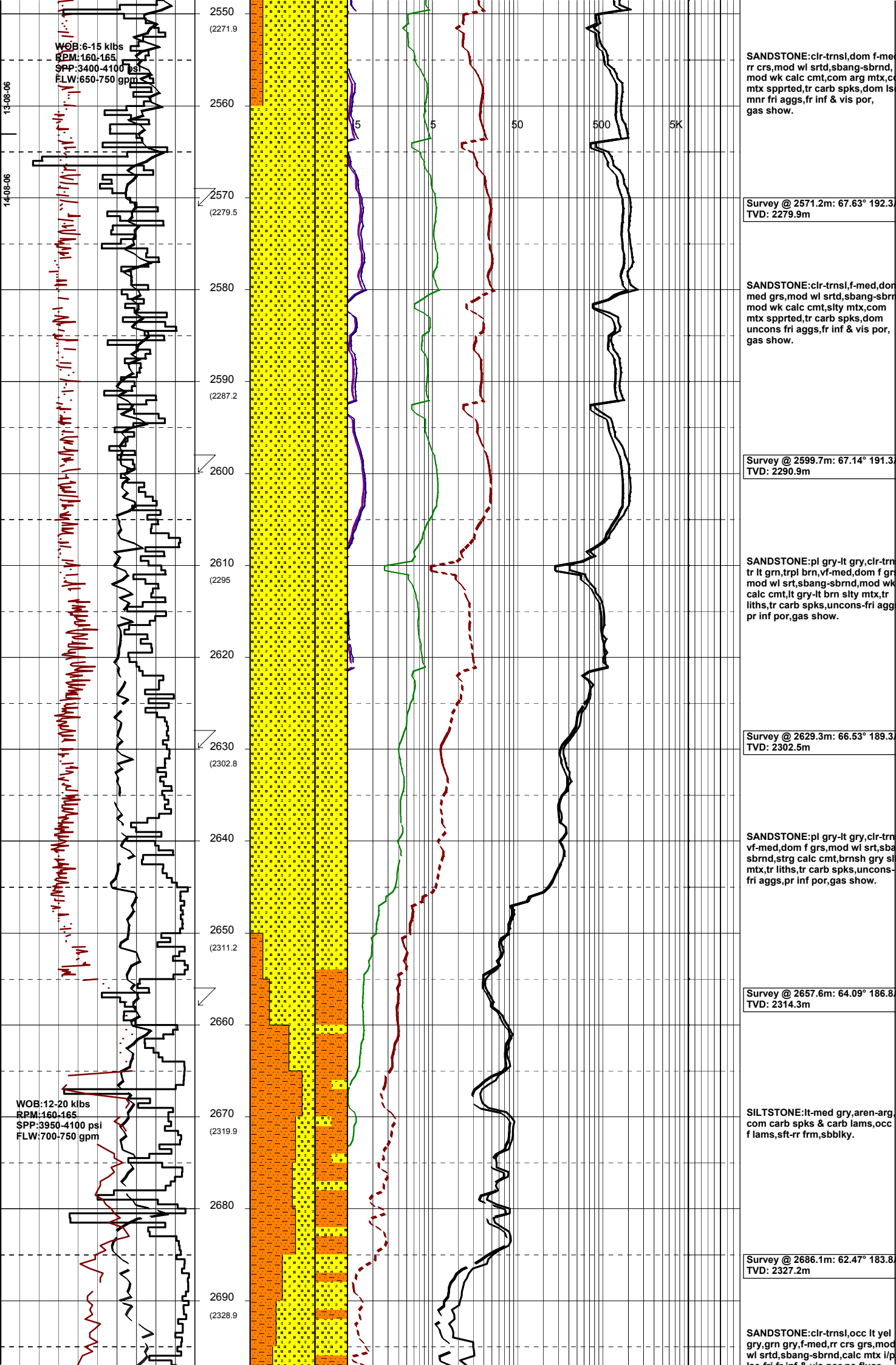
COAL:blk-brnsh blk,dll-sbvit,blk
v stly i/p & g/t CARBONACEOUS
SILTST.

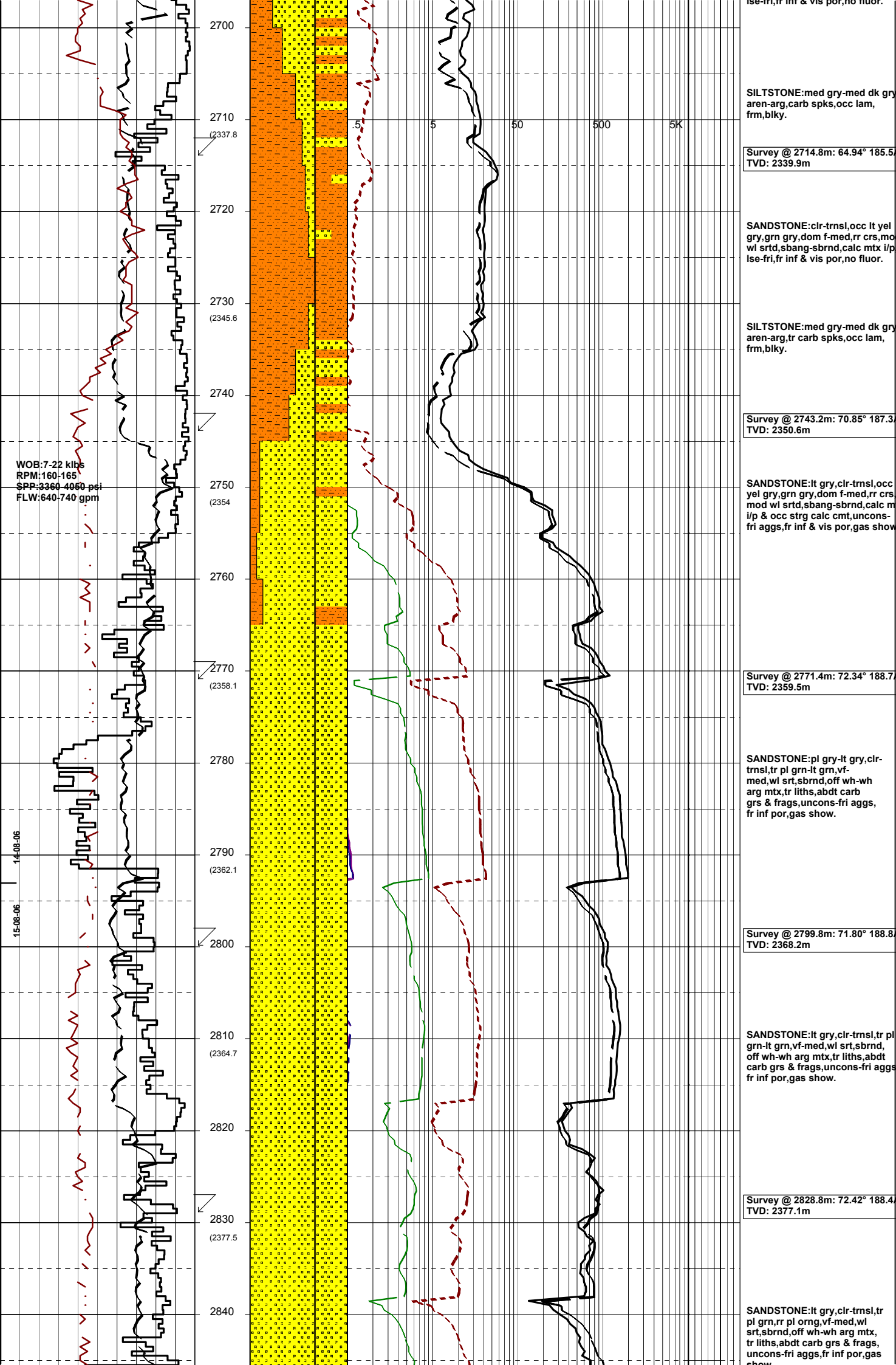
Survey @ 2514.6m: 65.25° 193.0°
TVD: 2257.8m

SILTSTONE:lt-med brn gry,com
dk brn gry,dom aren,arg i/p,
g/t SLTY CLYST,com carb spks,
frm-mod hd,sbbiky-sbfiss.

SANDSTONE:clr-trnsl,dom f-me
rr crs,mod wl srtd,sbang-sbrnd,
mod wk calc cmt,com arg mtx,carb
spks,dom lse-mnr fri,pr-fr vis
& inf por,gas show.

Survey @ 2543.2m: 67.51° 193.2°
TVD: 2269.2m





SILTSTONE: med gry-med dk gry aren-arg, carb spks, occ lam, frm, blkly.

Survey @ 2714.8m: 64.94° 185.5° TVD: 2339.9m

SANDSTONE: clr-trnsl, occ lt yel gry, grn gry, dom f-med, rr crs, mod wl srt, sbang-sbrnd, calc mtx i/p lse-fri, fr inf & vis por, no fluor.

SILTSTONE: med gry-med dk gry aren-arg, tr carb spks, occ lam, frm, blkly.

Survey @ 2743.2m: 70.85° 187.3° TVD: 2350.6m

SANDSTONE: lt gry, clr-trnsl, occ yel gry, grn gry, dom f-med, rr crs mod wl srt, sbang-sbrnd, calc m i/p & occ strg calc cmt, uncons-fri aggs, fr inf & vis por, gas show

Survey @ 2771.4m: 72.34° 188.7° TVD: 2359.5m

SANDSTONE: pl gry-lt gry, clr-trnsl, tr pl grn-lt grn, vf-med, wl srt, sbrnd, off wh-wh arg mtx, tr liths, abdt carb grs & frags, uncons-fri aggs, fr inf por, gas show.

Survey @ 2799.8m: 71.80° 188.8° TVD: 2368.2m

SANDSTONE: lt gry, clr-trnsl, tr pl grn-lt grn, vf-med, wl srt, sbrnd, off wh-wh arg mtx, tr liths, abdt carb grs & frags, uncons-fri aggs, fr inf por, gas show.

Survey @ 2828.8m: 72.42° 188.4° TVD: 2377.1m

SANDSTONE: lt gry, clr-trnsl, tr pl grn, rr pl org, vf-med, wl srt, sbrnd, off wh-wh arg mtx, tr liths, abdt carb grs & frags, uncons-fri aggs, fr inf por, gas show

WOB: 7-22 klls
RPM: 160-165
SPP: 3360-4060 psi
FLW: 640-740 gpm

14-08-06
15-08-06

2700
2710 (2337.8)
2720
2730 (2345.6)
2740
2750 (2354)
2760
2770 (2358.1)
2780
2790 (2362.1)
2800
2810 (2364.7)
2820
2830 (2377.5)
2840

5 5 50 500 5K

WOB:19.6 klbs
RPM:172
SPP:4080 psi
FLW:734 gpm

2850
(2383.9)

Survey @ 2857.4m: 70.32° 187.9°
TVD: 2386.3m

SILTSTONE:med gry-dk gry,aren
arg,occ carb spks,sft-frm,
sbbiky.

2860

.5 5 50 500 5K

2870
(2390.8)

Survey @ 2885.9m: 67.1° 188.0°
TVD: 2396.6m

SANDSTONE:lt gry,clr-trnsl, tr
pl grn-lt grn,rr pl orng,f-dom
med,wl srt,sbrnd,off wh-wh arg
mtx,tr liths,com carb grs & frags
dom unconc-occ fri aggs,gd inf
por,gas show.

2890
(2398.3)

Survey @ 2914.9m: 63.93° 186.0°
TVD: 2408.6m

SILTSTONE:med gry-dk gry,aren
arg,occ carb spks,sft-frm,
sbbiky.

2910
(2406.6)

REPAIR DEGASSER FROM
2919m to 2938m

CLAYSTONE:brn-gry,v sft-sft,bl
elongate,splintery in part,
massive and uniform.

2920

2930
(2415.4)

Survey @ 2943.8m: 62.42° 186.9°
TVD: 2421.6m

SILTSTONE:med gry-dk gry,aren
arg,occ carb spks,sft-frm,
sbbiky.

2940

WOB:17.1 klbs
RPM:162
SPP:4080 psi
FLW:731 gpm

2950
(2424.6)

Survey @ 2971.86m: 62.12° 187.4°
TVD: 2434.7m

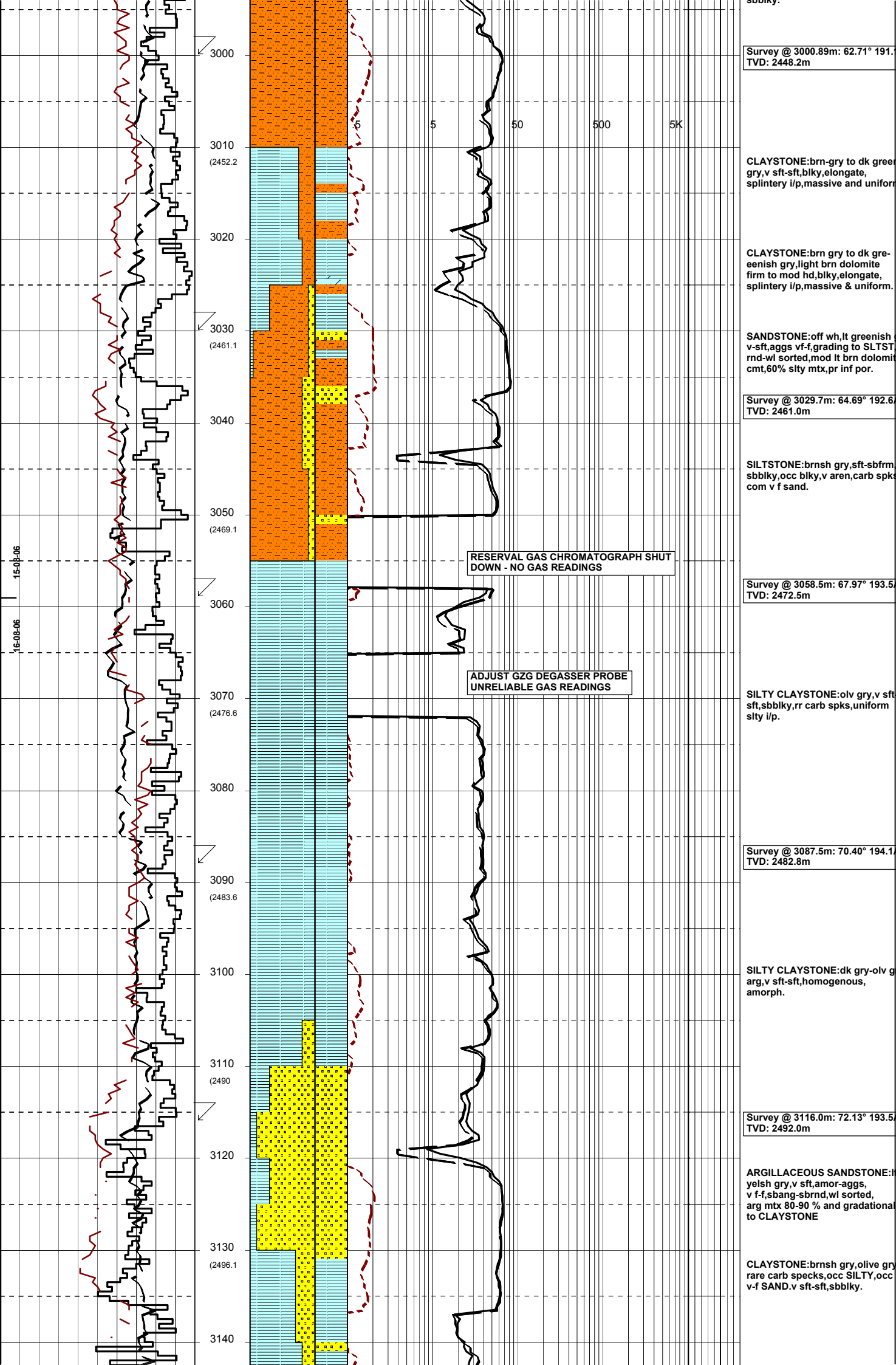
SILTSTONE:med gry-dk gry,aren
arg,occ carb spks,sft-frm,
sbbiky.

2960

2970
(2433.9)

2980

2990
(2443.1)



Survey @ 3000.89m: 62.71° 191.1°
TVD: 2448.2m

CLAYSTONE:brn-gry to dk greenish gry,v sft-sft,blky,elongate, splintery i/p,massive and uniform

CLAYSTONE:brn gry to dk greenish gry,light brn dolomite firm to mod hd,blky,elongate, splintery i/p,massive & uniform.

SANDSTONE:off wh,lt greenish v-sft,aggs vf-f,grading to SLTST rmd-wl sorted,mod lt brn dolomite cmt,60% stly mtx,pr inf por.

Survey @ 3029.7m: 64.69° 192.6°
TVD: 2461.0m

SILTSTONE:brnsh gry,sft-sbfrml sbblky,occ blky,v aren,carb spks com v f sand.

RESERVAL GAS CHROMATOGRAPH SHUT DOWN - NO GAS READINGS

Survey @ 3058.5m: 67.97° 193.5°
TVD: 2472.5m

ADJUST GZG DEGASSER PROBE UNRELIABLE GAS READINGS

SILTY CLAYSTONE:olv gry,v sft sft,sbblky,rr carb spks,uniform slty i/p.

Survey @ 3087.5m: 70.40° 194.1°
TVD: 2482.8m

SILTY CLAYSTONE:dk gry-olv gry arg,v sft-sft,homogenous, amorph.

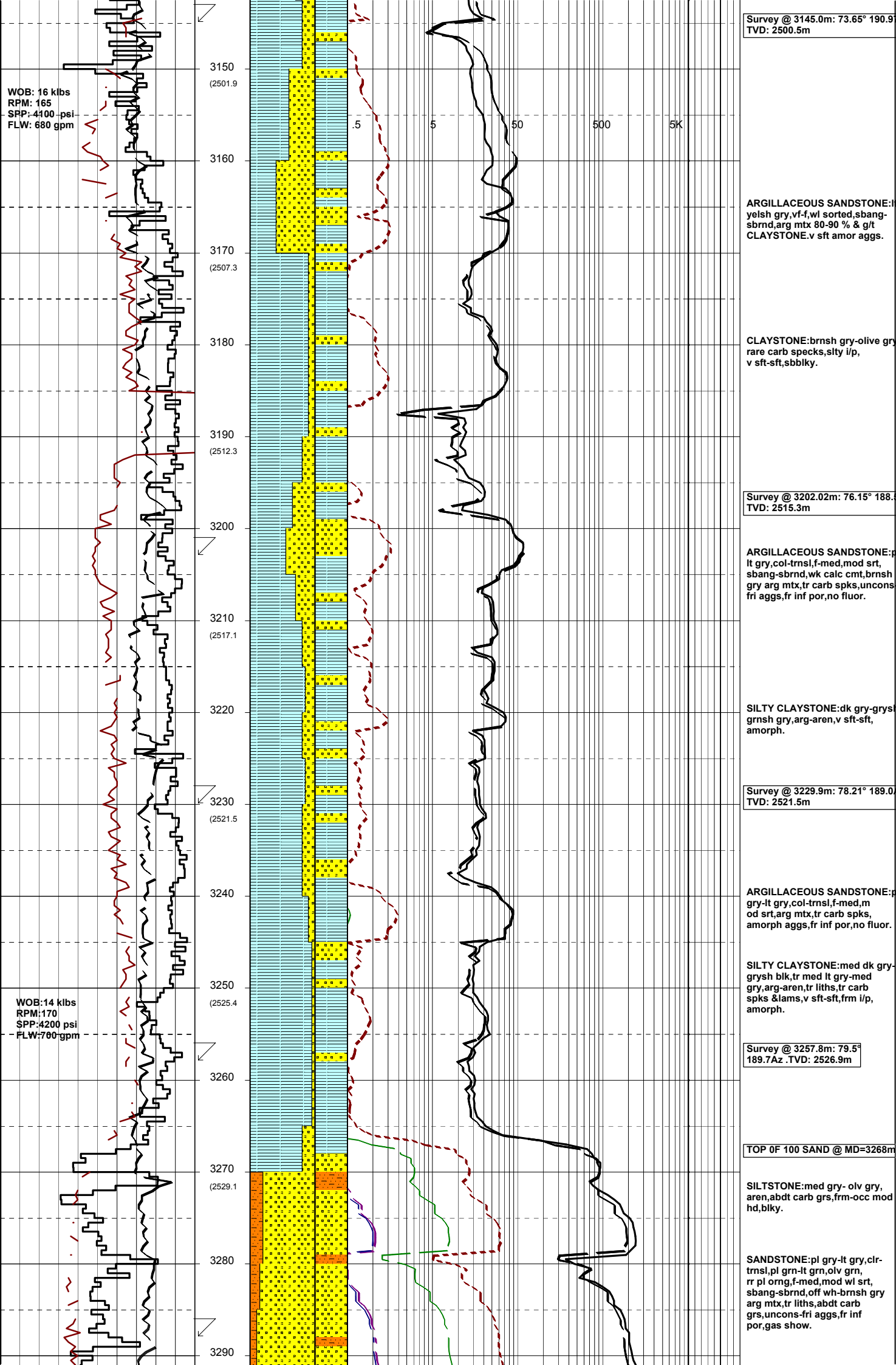
Survey @ 3116.0m: 72.13° 193.5°
TVD: 2492.0m

ARGILLACEOUS SANDSTONE:lt yelsh gry,v sft,amor-aggs, v f-f,sbang-sbrnd,wl sorted, arg mtx 80-90 % and gradational to CLAYSTONE

CLAYSTONE:brnsh gry,olive gry rare carb specks,occ SILTY,occ v-f SAND.v sft-sft,sbblky.

15-08-06

16-08-06



Survey @ 3287.1m: 79.84°
188.4Az .TVD: 2532.1m

SILTSTONE:med gry- olv gry,
frm,blky,aren,carb spk.

Survey @ 3316.29m: 81.38°
188.88z .TVD: 2536.9m

SANDSTONE:off wh,lt yell-gry,
grs clr trnsl,grn,occ-ornng-brn,
blk carb,f-med,wl sorted,sbang-
md,60% lse & 40% fri aggs,calc-
i/p,calc grs,wk calc cmt,mtx-
10-40 %,com carb grs,occ carb
lam.

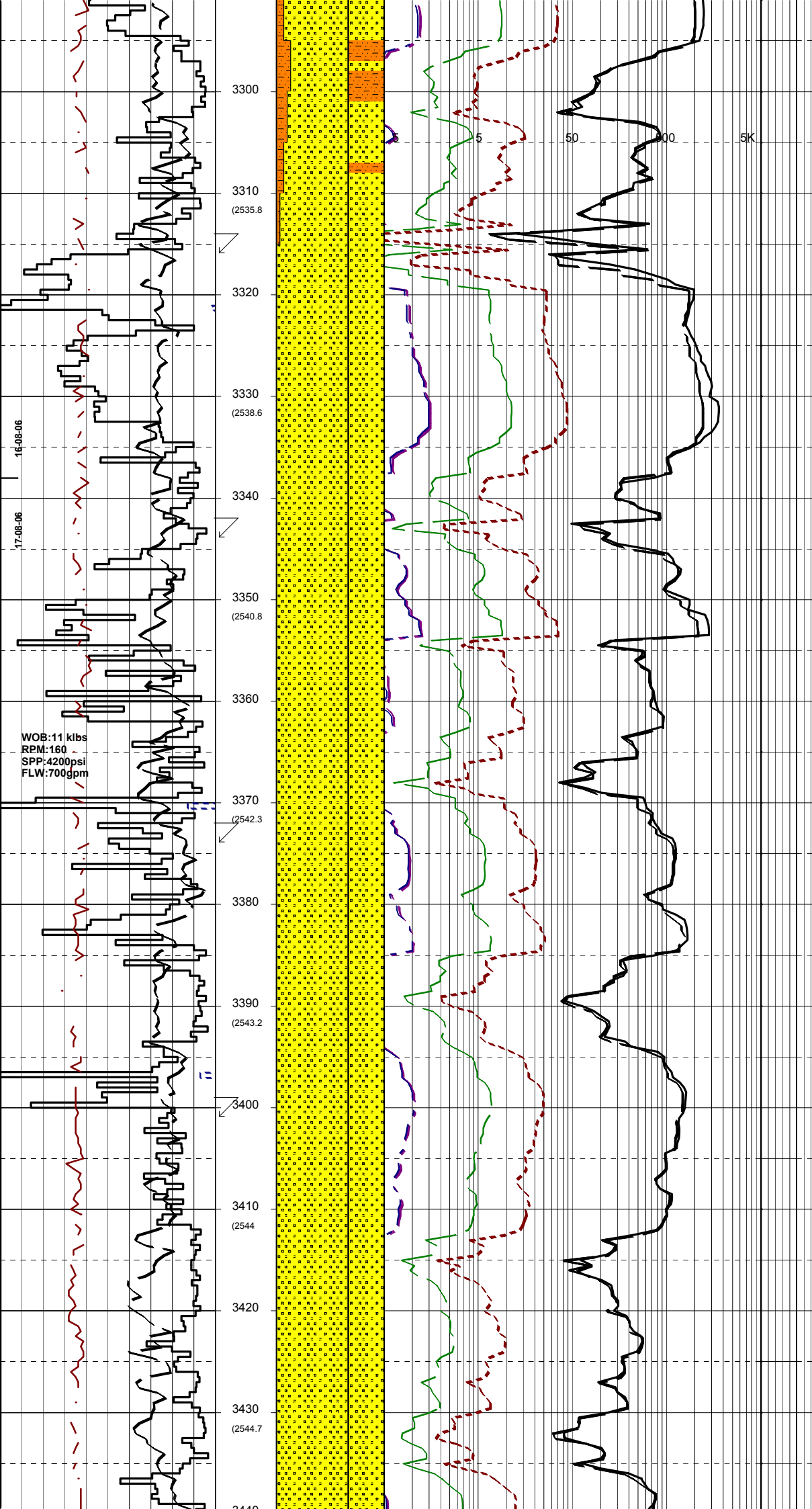
Survey @ 3344.87m: 84.32°
189.94z .TVD: 2540.4m

Survey @ 3373.11m: 87.05°
190.334z .TVD: 2542.5m

SANDSTONE:lt gry,lt yell-gry
grs:clr-trnsl,mnr blk,pl grn,
orgn brn,f-med,sbrnd to sbang,
80-90 % lse,10-20% v sft aggs
with 10-20 % arg mtx,gd inf por,
gas show.

Survey @ 3401.37m: 88.54°
190.954z .TVD: 2543.6m

SANDSTONE:lt gy,lt yel-gy,
GRAINS:clr-trnsl,mnr blk,pl
grn,orgn-br f-med,sbrnd-sbang,
50% loose,50% vsft aggs w/- 10-
30% arg mtx,gd inf por.



16-08-06

17-08-06

WOB:11 klbs
RPM:160
SPP:4200psi
FLW:700gpm

3300
3310 (2535.8)
3320
3330 (2538.6)
3340
3350 (2540.8)
3360
3370 (2542.3)
3380
3390 (2543.2)
3400
3410 (2544)
3420
3430 (2544.7)
3440

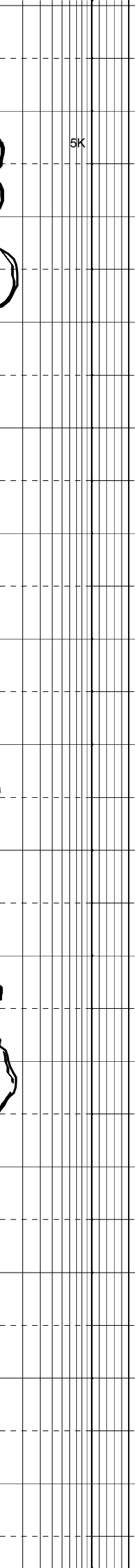
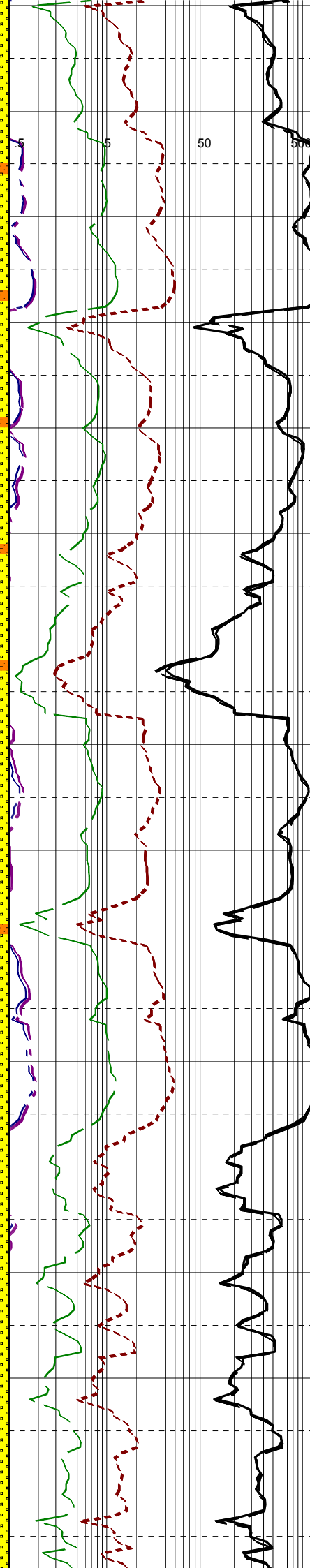
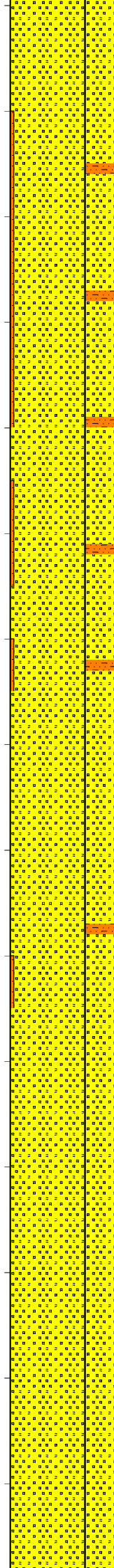
5 50 100 5K

WOB:9-20 klbs
RPM:160-180
SPP:3900-4340 psi
FLW:685-695 gpm

WOB:7-20 klbs
RPM:120-160
SPP:3800-4400 psi
FLW:640-700 gpm

17-08-06
18-08-06

3440
3450 (2545.9)
3460
3470 (2547.1)
3480
3490 (2548.3)
3500
3510 (2549.1)
3520
3530 (2549.7)
3540
3550 (2549.8)
3560
3570 (2549.2)
3580



Survey @ 3456.45m: 85.84°
189.31z . TVD: 2546.2m

SILTSTONE:olv gy,mod hg-hd, blkly aren.

SANDSTONE:lt gy,lt yel-gy,GR clr-trnsl,mnr blkly,pl grn,org-br, f-med, sbrnd-sbang,30% loose, 10% v sft aggs w/- 60-70% arg mt,x,wh kao mt,x i/p,fr inf por.

SILTSTONE:psble caving,olv gy,mod hd hd,blkly,aren.

SANDSTONE:lt gy,lt yel-gy,GR clr-trnsl,mnr blkly,pl grn,org-br, f-med, sbrnd-sbang,90% loose, 10% v sft aggs w/- 20-30% arg mt,x,wh kao mt,x i/p,fr-gd inf por.

Survey @ 3484.78m: 86.88°
187.52z . TVD: 2548.2m

SILTSTONE:olv gy,mod hg-hd, blkly aren.

Survey @ 3513.53m: 88.17°
186.43z . TVD: 2549.3m

SANDSTONE:lt gy,lt yel-gy,GR clr-trnsl,mnr blkly,pl grn,org-br, f-dom,med f,sbrnd-sbang,90% loose, 10% vsft aggs,w/- 20-30% arg mt,x,wh kao mt,x i/p,fr-gd inf por..

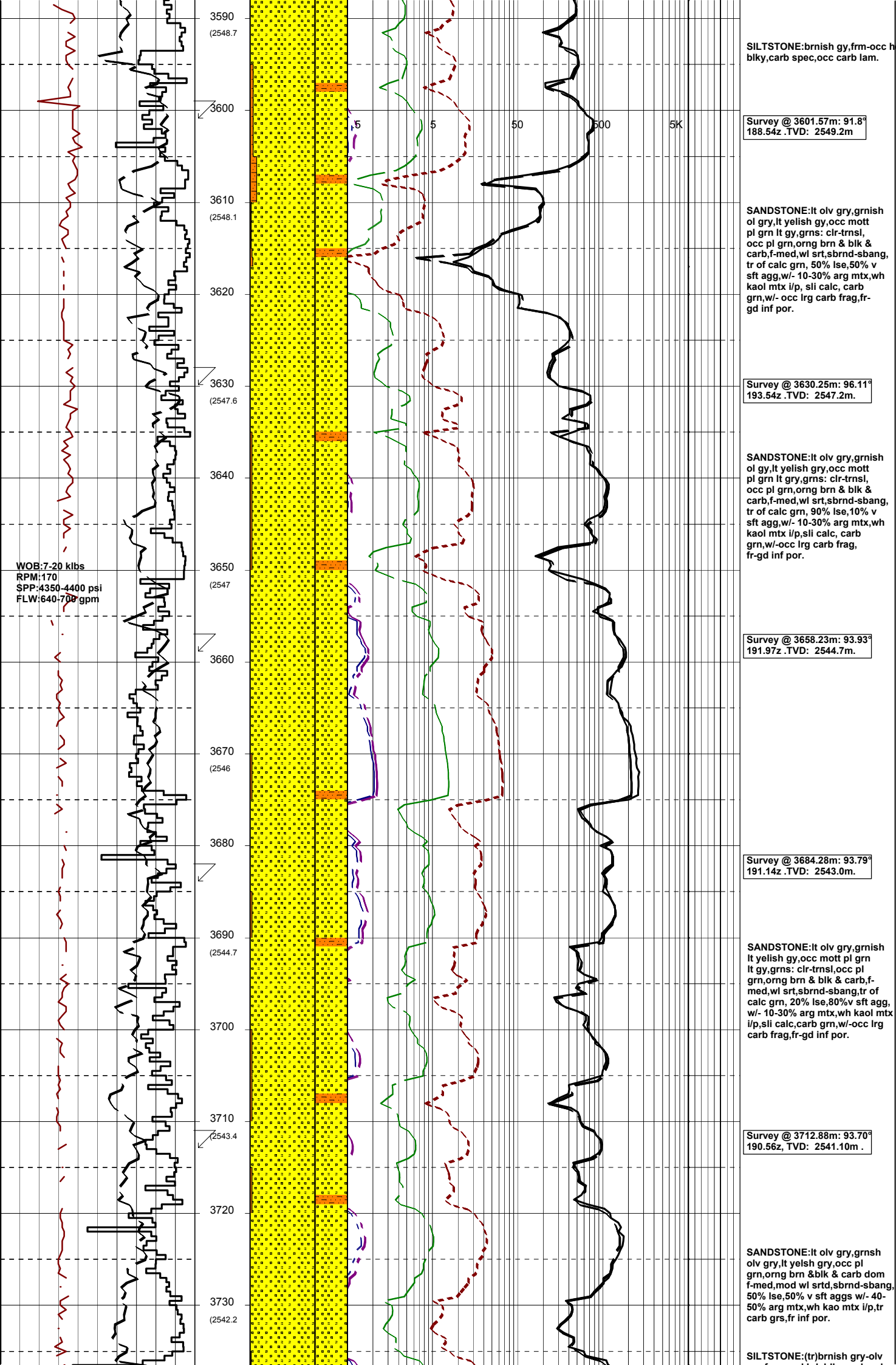
SILTSTONE:olv gry,mod hg-hd, blkly aren.

Survey @ 3542.58m: 89.17°
187.25z TVD: 2549.8m

SANDSTONE:lt gry,lt yel-grSy,GR clr-trnsl,mnr blkly,pl grn,org-br, f-med f,sbrnd-sbang,90% loose, 10% vsft aggs w/- 20-30% arg mt,x,wh kao mt,x i/p,fr-gd inf por..

Survey @ 3573.26m: 90.54°
186.93z . TVD: 2549.7m

SANDSTONE:lt gry, olv gry, lt yelish gry,occ mottpl grn/lt gy, grs:clr- trnsl,occ pl grn, orgn brn,& blk, f-med,mod-well-sorted subrnd-subbang,tr calc grs,70% loose,30% vsft aggs w/- 20-40% arg mt,x,wh kao mt,x i/p, slightly calc,occ carb,fr inf por.



gry, frm-mod nd, blk, carb spk
occ carb lam.

Survey @ 3741.42m: 93.41°
191.64z, TVD: 2539.3m .

SANDSTONE:lt olv gry,grnsh
olv gry,lt yelish gry,occ pl
grn,org brn & blk & carb f-
med,rr crs,mod wl srtd,sbrnd-
sbang,tr calc grs,80% lse,20%
v aggs,sft aggs w/- 20-30% arg
grs,fr-gd inf por.

SILTSTONE:brnsh gy-olv gy,
frm-mod hd,blk,carb spk,occ
carb lam.

SILTSTONE:med gy-olv gy, occ
brnsh gry,frm-occ mod hd,blk,
aren,carb spk.

Survey @ 3773.2m: 92.61°
190.86z, TVD: 2537.7m

SILTSTONE:med gry-med dk gry
fri,sbbiky aren,carb spk,rr
indstly lam.

WOB:15-25 klbs
RPM:120-760
SPP:4000-4350 psi
FLW:590-685 gpm

